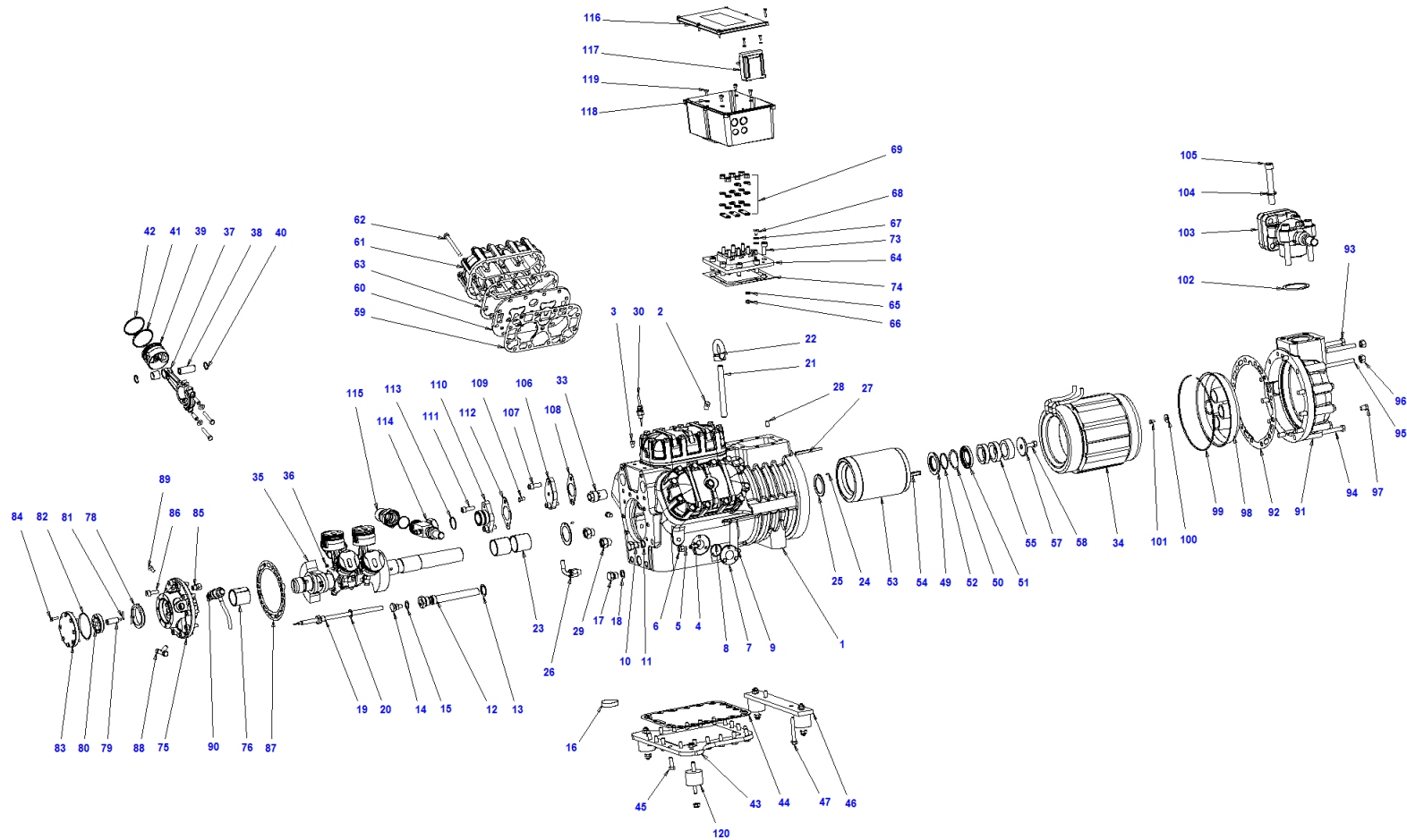


Z 35 106 Y



Pos.	Code	Description	Quantity	Note	Notice:
1	S6351001AA	Compressor body	1		
2	S6501130	Plug 1/4 NPT	3		
3	S1251130	Plug 1/8 NPT	1		
4	RA1001000	Connection 90° 1/4 NPT - 1/4 SAE	1		
5	G200002	Copper nipple	1		
6	G1800F026	Filler 1/4 SAE	1		
7	SOS1	Oil sight glass	2		
8	S3131OR	O-ring for oil sight glass	2		
9	TE1006016	Screw M6x16 UNI5739	6		
10	S8601130	Plug 3/8 gas ISO 228/1	1		
11	S6501056	3/8 gas gasket	1		
12	S4501047-A	Oil strainer	1		
13	S8701056	3/4 gas gasket	1		
14	S8601130	Plug 3/8 gas ISO 228/1	1		
15	S6501056	3/8 gas gasket	1		
16	W3501128	Magnet	1		
17	S1451130	Plug 1/4" gas ISO 228/1	1		
18	S1351056	Gasket	1		
19	S4601351	Sleeve for Crankase Heater	1		
20	S6501056	3/8 gas gasket	1		

Pos.	Code	Description	Quantity	Note	Notice:
21	RM1016160	Screw	1		
22	GO2016000	Raising ring	1		
23	S6501013-A	Main friction bearing	2		
24	SE1004008	Pin	2		
25	S6501011	Thrust collar	2		
26	S860A070	Oil return valve	1		
27	S6301063	Key 8x5x90 UNI 7510	1		
28	GR101016	Stop dowel	1		
29	S650A076	Pressure regulatng valve	2		
30	EC50D	Temperatur sensor diagnose	1		
31	ML_Z	Nameplate	1		
32	RI1025035	Rivet	2		
33	S6301156	Safety relief valve	1		
34	RS16A	Stator 230-400 / 3 / 50 DOL	1		
34	RS16B01	Stator 400 / 3 / 50 SDS	1		
34	RS16CAMS	Stator 400 / 3 / 50 PWS	1		
35	S6501002AA	Shaft	1		
36	GR100810	Stop dowel	3		
37	S6501003AA	Connecting rod	6		
38	S6301005	Piston pin	6		

Pos.	Code	Description	Quantity	Note	Notice:
39	S6351004-A	Piston	6		
40	S6301149	Circlip	12		
41	S6356001	Oil scraper ring	6		
42	S6355001	Compression ring	6		
43	S8601014	Bottom plate	1		
44	S8601015	Gasket for bottom plate	1		
45	TE1010030	Screw M10x30 UNI5739	20		
46	S4501018AA	Thrusting plate	1		
47	TE1010030	Screw M10x30 UNI5739	2		
49	S6501078	Shaft thrust bearing	1		
50	ANLMKAS62	Spring	1		
51	S6501120	Thrust collar	1		
52	S3175OR	OR3175	1		
53	RR18A	Rotor	1		
53	RR18S	Rotor	1		
54	W2101063	Key 12x8x110	1		
57	S4501045	Washer	1		
58	TE1212045	Screw M12x45 UNI5739	1		
59	S6351031D	Gasket valve plate - body	3		
60	S6351006HH	Valve plate	3		

Pos.	Code	Description	Quantity	Note	Notice:
61	S6501007HH	Head	3		
62	TE1210090	Screw M10x90 UNI5737	39		
63	S8701032	Gasket valve plate - head	3		
64	S8601040	Terminal plate	1		
65	RO1106012	Washer 6.4x12x1.6 UNI 6592	6		
66	DE2206006	Nut M6X1X6 DIN 980	6		
67	RO1106012	Washer 6.4x12x1.6 UNI 6592	2		
68	TS4006008	Screw M6x8 ISO 7045	1		
69	SK261310	Staple bars connection kit - V/Z/W NEW	1		
73	TC2710025	Screw M10x25 UNI5931	8		
74	S4501043C	Connections plate gasket	1		
75	S4951009AA	Flange	1		
76	S6501012-A	Friction bearing flange side	1		
78	S6301069	Oil pump eccentric	1		
79	S6501049	Oil pump stud	1		
80	S4951125	Oil pump gear	1		
81	S4951134	Oil pump spring	2		
82	S3300OR	O-ring for oil pump cover	1		
83	S6301067AA	Oil pump cover	1		
84	TE1006020	Screw M6x20 UNI5739	8		

Pos.	Code	Description	Quantity	Note	Notice:
85	S4951044	Oil pump safety valve	1		
86	TC2410030	Screw M10x30 UNI5931	10		
87	S6501033C	Flange gasket	1		
88	RA2001030	Connection a T 1/8 NPT-1/4 Sae-1/4 Shrader	1		
89	S1251130	Plug 1/8 NPT	1		
90	EC1630DRIC	DIFF. PR. SWITCH KIT INT250	1		use EC1620RIC with DELTA P2
91	S6501010AA	Suction flange	1		
92	S6501034C	Suction flange - body gasket	1		
93	TE1212170	Screw M12x170 UNI5737	2		
94	S6501130	Plug 1/4 NPT	2		
95	S6501153	Screw M12 L=145	2		
96	DE1112012	Nut M12x1,75x12 UNI 5587	2		
97	TE1212150	Screw M12x150 UNI5737	8		
98	S6501038-A	Suction strainer	1		
99	AN2023000	Ring	1		
100	RO1006024	Washer M6x24 UNI 6593	1		
101	TE1006012	Screw M6x12 UNI5739	1		
102	S6301055B	Valve gasket	1		
103	VGS080078	Valve	1		
104	RO1016030	Washer M16x30 UNI 6592	4		

Pos.	Code	Description	Quantity	Note	Notice:
105	TC2216110	Screw M16x110 UNI5931	4		
106	S4501060-A	Discharge flange	1		
107	TC2410030	Screw M10x30 UNI5931	2		
108	S4501058D	Valve gasket	1		
109	S1251130	Plug 1/8 NPT	1		
110	S6401060	Discharge flange	1		
111	TC2410030	Screw M10x30 UNI5931	2		
112	S4501058D	Valve gasket	1		
113	V0001559	Teflon gasket	2		
114	VRR060000	Rotalock valve	1		
115	CRS060035	Rotalock port	1		
116	S8601039	Terminal box	1		
117	ECA11D	INT69 TML diagnose module kit	1		use ECA11D-UPG with INT 69 TM
118	RO2006011	Washer 6x10 UNI 1751A	4		
119	TS4006012	Screw M6x12 ISO 7045	4		
120	SK205060	Rubber vibration absorber kit	1		
	S635A004	Piston kit	1		
	SK103800	Suction valve kit	1		
	SK132500	Connecting rod/piston kit	6		
	SK140400	Friction bearing kit	1		

Pos.	Code	Description	Quantity	Note	Notice:
	SK170100	Oil sight glass kit	2		
	SK182100	3 ph terminal box kit	1		
	SK190100	Oil strainer kit	1		
	SK210000	Oil pump kit	1		
	SK232111	Complete electric motor - 230-400 / 3 / 50 DOL	1		
	SK232112	Complete electric motor - 400 / 3 / 50 SDS	1		
	SK232113	Complete electric motor - 400 / 3 / 50 PWS	1		
	SK2400	Gasket kit	1		
	SK261310	Staple bars connection kit - V/Z/W NEW	1		
	SK49503	Valve plate kit	3		
	SK890000	Kit thrust collar and spring V - Z	1		