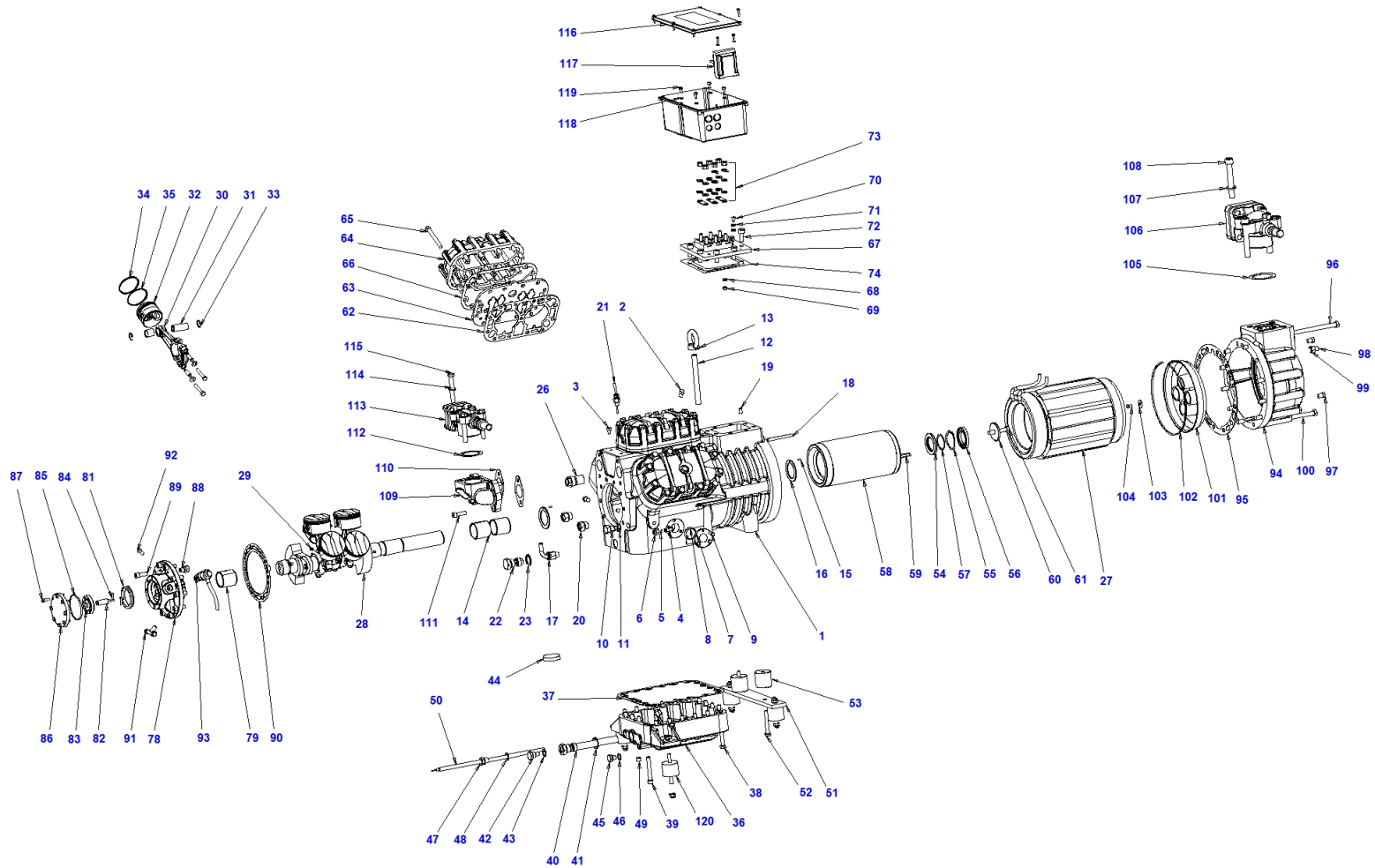


## Z 50 140 Y



Pos.	Code	Description	Quantity	Note	Notice:
1	S6471001AA	Compressor body	1		
2	S6501130	Plug 1/4 NPT	3		
3	S1251130	Plug 1/8 NPT	1		
4	RA1001000	Connection 90° 1/4 NPT - 1/4 SAE	1		
5	G200002	Copper nipple	1		
6	G1800F026	Filler 1/4 SAE	1		
7	SOS1	Oil sight glass	2		
8	S3131OR	O-ring for oil sight glass	2		
9	TE1006016	Screw M6x16 UNI5739	6		
10	S8601130	Plug 3/8 gas ISO 228/1	1		
11	S6501056	3/8 gas gasket	1		
12	RM1016160	Screw	1		
13	GO2016000	Raising ring	1		
14	S6501013-A	Main friction bearing	2		
15	SE1004008	Pin	2		
16	S6501011	Thrust collar	2		
17	S860A070	Oil return valve	1		
18	S6301063	Key 8x5x90 UNI 7510	1		
19	GR101016	Stop dowel	1		
20	S650A076	Pressure regulatng valve	2		

Pos.	Code	Description	Quantity	Note	Notice:
21	EC50D	Temperatur sensor diagnose	1		
22	S6501052AA	Compression connectin for oil filter	1		
23	S8701056	3/4 gas gasket	1		
24	ML_Z	Nameplate	1		
25	RI1025035	Rivet	2		
26	S6301156	Safety relief valve	2		
27	RS18A	Stator 230-400 / 3 / 50 DOL	1		
27	RS18B	Stator 400 / 3 / 50 SDS	1		
27	RS18C01AMS	Stator 400 / 3 / 50 PWS	1		
27	RS18S01	Stator 230-400 / 3 / 60 DOL	1		
28	S6501002AA	Shaft	1		
30	S6501003AA	Connecting rod	6		
31	S6501005	Piston pin	6		
32	S8601004-A	Piston	6		
33	S6301149	Circlip	12		
34	S8605001	Compression ring	6		
35	S8606001	Oil scraper ring	6		
36	S8701014AA	Bottom plate	1		
37	S8601015	Gasket for bottom plate	1		
38	TE1210075	Screw M10x75 UNI5737	17		

Pos.	Code	Description	Quantity	Note	Notice:
39	TC2210075	Screw M10x75 UNI5931	3		
40	S4501047-A	Oil strainer	1		
41	S8701056	3/4 gas gasket	1		
42	S8601130	Plug 3/8 gas ISO 228/1	1		
43	S6501056	3/8 gas gasket	1		
44	W3501128	Magnet	1		
45	S1451130	Plug 1/4" gas ISO 228/1	1		
46	S1351056	Gasket	1		
47	S4601351	Sleeve for Crankase Heater	1		
48	S6501056	3/8 gas gasket	1		
49	TA1514000	Plug 1/4" NPT	1		
51	S4501018AA	Thrusting plate	1		
52	TE1210075	Screw M10x75 UNI5737	2		
53	S4301085	Support	2		
54	S6501078	Shaft thrust bearing	1		
55	ANLMKAS62	Spring	1		
56	S6501120	Thrust collar	1		
57	S3175OR	OR3175	1		
58	RR20A	Rotor	1		
59	S6501063	Key 12x8x140	1		

Pos.	Code	Description	Quantity	Note	Notice:
60	S4501045	Washer	1		
61	TE1212070	Screw M12x70 UNI5737	1		
62	S8601031B	Gasket valve plate - body	3		
63	S8601006HH	Valve plate	3		
64	S6501007HH	Head	3		
65	TE1210090	Screw M10x90 UNI5737	39		
66	S8701032	Gasket valve plate - head	3		
67	S8601040	Terminal plate	1		
68	RO1106012	Washer 6.4x12x1.6 UNI 6592	6		
69	DE2206006	Nut M6X1X6 DIN 980	6		
70	TS4006008	Screw M6x8 ISO 7045	1		
71	RO1106012	Washer 6.4x12x1.6 UNI 6592	2		
72	TC2710025	Screw M10x25 UNI5931	8		
73	SK261310	Staple bars connection kit - V/Z/W NEW	1		
74	S4501043C	Connections plate gasket	1		
78	S4951009AA	Flange	1		
79	S6501012-A	Friction bearing flange side	1		
81	S6301069	Oil pump eccentric	1		
82	S6501049	Oil pump stud	1		
83	S4951125	Oil pump gear	1		

Pos.	Code	Description	Quantity	Note	Notice:
84	S4951134	Oil pump spring	2		
85	S3300OR	O-ring for oil pump cover	1		
86	S6301067AA	Oil pump cover	1		
87	TE1006020	Screw M6x20 UNI5739	8		
88	S4951044	Oil pump safety valve	1		
89	TC2410030	Screw M10x30 UNI5931	10		
90	S6501033C	Flange gasket	1		
91	RA2001030	Connection a T 1/8 NPT-1/4 Sae-1/4 Shrader	1		
92	S1251130	Plug 1/8 NPT	1		
93	EC1630DRIC	DIFF. PR. SWITCH KIT INT250	1		use EC1620RIC with DELTA P2
94	S6501010AA	Suction flange	1		
95	S6501034C	Suction flange - body gasket	1		
96	TE1212170	Screw M12x170 UNI5737	2		
97	S6501130	Plug 1/4 NPT	2		
98	S6501153	Screw M12 L=145	2		
99	DE1112012	Nut M12x1,75x12 UNI 5587	2		
100	TE1212150	Screw M12x150 UNI5737	8		
101	S6501038-A	Suction strainer	1		
102	AN2023000	Ring	1		
103	RO1006024	Washer M6x24 UNI 6593	1		

Pos.	Code	Description	Quantity	Note	Notice:
104	TE1006012	Screw M6x12 UNI5739	1		
105	S6301055B	Valve gasket	1		
106	VGS081078	Valve	1		
107	RO1016030	Washer M16x30 UNI 6592	4		
108	TC2216110	Screw M16x110 UNI5931	4		
109	S6501060AA	Discharge collector	1		
110	S4501058D	Valve gasket	2		
111	TC2410035	Screw M10x35 UNI5931	4		
112	S4501055B	Valve gasket	1		
113	VGS070063	Valve	1		
114	RO1012024	Washer M12x24 UNI 6592	4		
115	TE1212085	Screw M12x85 UNI5737	4		
116	S8601039	Terminal box	1		
117	ECA11D	INT69 TML diagnose module kit	1		use ECA11D-UPG with INT 69 TM
118	RO2006011	Washer 6x10 UNI 1751A	4		
119	TS4006012	Screw M6x12 ISO 7045	4		
120	SK205060	Rubber vibration absordber kit	1		
	S860A004	Piston kit	1		
	SK103700	Valve kit	1		
	SK103810	Suction valve kit	1		

Pos.	Code	Description	Quantity	Note	Notice:
	SK133001	Connecting rod/piston kit	6		
	SK140400	Friction bearing kit	1		
	SK170100	Oil sight glass kit	2		
	SK182100	3 ph terminal box kit	1		
	SK190100	Oil strainer kit	1		
	SK210000	Oil pump kit	1		
	SK232411	Complete electric motor - 230-400 / 3 / 50 DOL	1		
	SK232412	Complete electric motor - 400 / 3 / 50 SDS	1		
	SK232413	Complete electric motor - 400 / 3 / 50 PWS	1		
	SK232416	Complete electric motor - 230-400 / 3 / 60 DOL	1		
	SK2550	Gasket kit	1		
	SK261310	Staple bars connection kit - V/Z/W NEW	1		
	SK87004	Valve plate kit	3		
	SK890000	Kit thrust collar and spring V - Z	1		